

Network Video Recorder

Quick Start Guide

1. Notes

- Please read this instruction carefully for correct use of the product and preserve it for reference purposes.
- All the examples and pictures used here are for reference only.
- There may be several technically incorrect places or printing errors in this manual. The updates will be added into the new version of this manual. The contents of this manual are subject to change without notice.
- This device should be operated only from the type of power source indicated on the marking label. The voltage of the power must be verified before using the same.

2. Packing Check

Please check the device and the accessories after getting the device. If there are any damages, shortages or defects, please contact your dealer immediately.

3. HDD Installation

This series of the product supports 1 SATA hard drive. Please make sure that the device is powered off before the installation. The pictures of the installation are only for reference, please take the real object as the standard.



① Loosen the screws to open the cover.



② Put the screws into the HDD.



③ Place the HDD onto the bottom of the case.



④ Turn over the machine and secure the HDD with the screws.



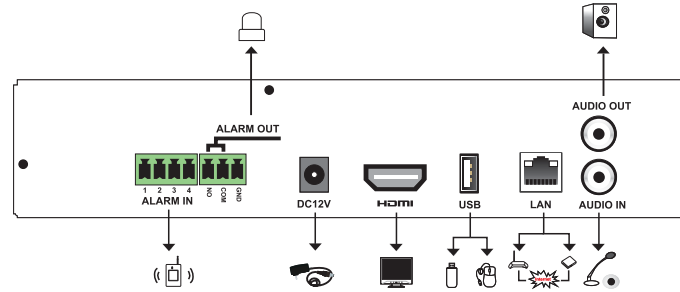
⑤ Connect the power and data cables.



⑥ Install the cover back and fix it.

4. Rear Panel Instruction

The interfaces of the rear panel are for reference only.



5. Startup & Shutdown

▶ Startup

- ① Connect the monitor and the power.
- ② The device will boot and the power indicator will display blue.
- ③ A wizard window will pop up.

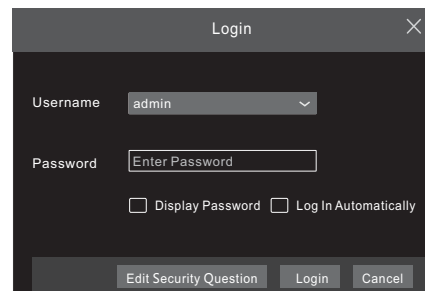
▶ Shutdown

Go to “Main Menu” and then select “Shutdown” icon. This will bring up a shutdown window. The device will shut down by clicking “OK” button. Then disconnect the power.

6. Login

You must configure the wizard if you start the NVR for the first time. You can skip the settings of wizard next time. The default username is **admin** and the password is set by yourself when you configure the wizard for the first time. Click “Start” and select “Login”. This will take you to see a login box. Input default username and password you set and you can see the live image.

Important: Please Take Note of this password, Email and Secret Question

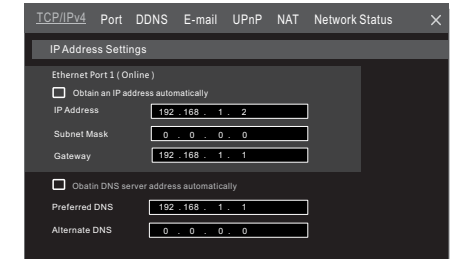


7. Network Configuration

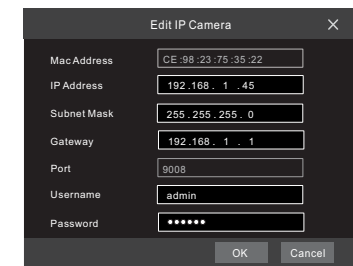
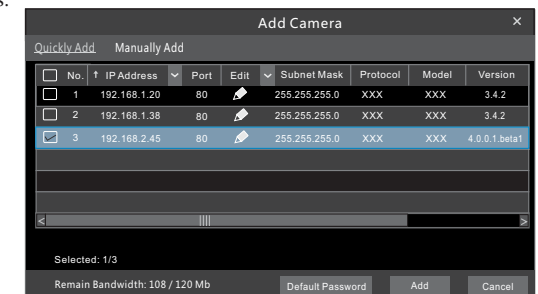
After you finish adding IP cameras, you can see the live images through the monitor of the NVR. The following will mainly introduce how to add the IP cameras via LAN/WAN.

▶ LAN


- ① Set the network of the NVR. Go to Start → Settings → Network → TCP/IPv4. Input IP address, subnet mask, gateway, etc. If using DHCP, please enable DHCP in both the NVR and the router.
- ② Go to Start → Settings → Network → Port. Input HTTP port (the default value is 80), server port (the default port is 6036).
- ③ Click “Apply” to save the settings.

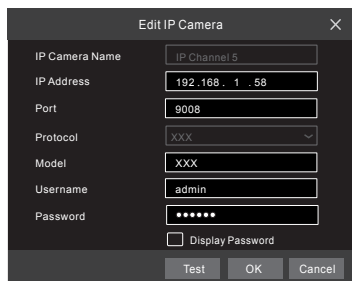
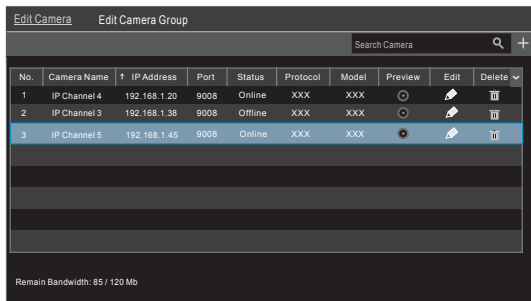


- ④ Go to Start → Settings → Camera → Add Camera. The NVR will automatically refresh the cameras searched. The IPC which supports the Onvif protocol be added manually. If the IPC searched is not in the same local network as the NVR, you should select the device and click to modify the IP address.




- ⑤ Checkmark the device you want to add and then click “Add” button. The NVR will automatically refresh the cameras and return to “Edit Camera” interface.

“Online” status means connecting the device successfully and you will see the live image. You may select the added device and click  button to modify channel, IP address, ect.

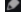


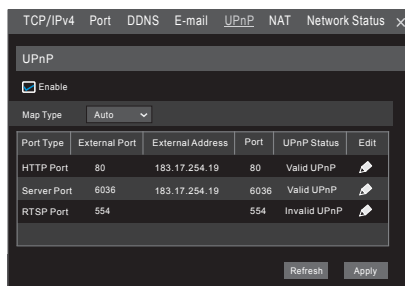
► WAN

- Set the network of the NVR. Go to Start → Settings → Network → TCP/IPv4. Input static IP address or enable PPPoE and then input the user name and password received from your ISP.
- Go to Start → Settings → Camera. Click “Add Camera” or  behind the column of the search camera and select “Manually Add” to add the IP cameras. Input IP address, server port, username and password of the IP camera. The IP camera must be connected over WAN. And here the IP address of the IP camera must be a WAN IP address.

8. UPnP

You can use the UPnP function to enable the fast connection of the device to WAN via a router without port mapping.

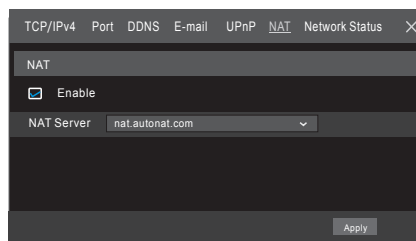
- Go to Start → Settings → Network → UPnP, and enable UPnP and then click “Apply” button to save.
- Enable the UPnP function in the router.
- Click “Refresh” button to refresh the UPnP status. If the UPnP status were still “Invalid UPnP” after refreshing it for several times, the port would be wrong. Please change the mapping type to “Manual” and then click  to modify the port until the UPnP status turns to “valid UPnP”.



9. NAT

► NAT Settings


- The NVR shall be powered on and connected to the network.
- Go to Start → Settings → Network → TCP/IPv4. You can obtain the IP address, subnet mask and gateway automatically. You can also manually enter them according to the actual network situation. Please make sure the network segment is the same as that of the network which is used.
- Set the preferred or alternative DNS Server. Click “Apply” to save the parameters.
- Go to Start → Settings → Network → NAT tab. Enable NAT and select the NAT Server (The default NAT Server is *nat.autonat.com*). Click “Apply” to save the parameters.



► NAT Access

After finishing the NAT settings, you can input <http://www.autonat.com> in the IE address bar and then press enter to go to the following interface. If you are the first time to access the NAT, you shall download and install the ActiveX according to the popup tips. After installing ActiveX successfully, it will pop the login box.





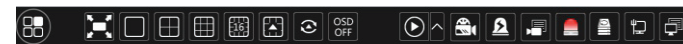
Device Serial Number: Click  on the menu bar at the bottom of the live interface to check the serial number or go to Start → Settings → Network → Network Status to check the serial number of the NVR).

User Name: The username of the NVR. The default username is admin.

Password: The password of the NVR. The password is set by yourself when you configure the wizard for the first time.

10. Manual Recording

Before recording, please install and format a HDD. In the live interface you can see the menu toolbar. Click  button to start recording. Click it again to stop recording. You can also click  to check the status of the recording.





11. Playback

► Instant playback

Click “Instant Playback” in the right-click menu of the camera’s preview window to select or drag the playback progress bar to change the playback time to play back the record.

► General playback

Click  on the tool bar at the bottom of the live preview interface or click Start → Playback to go to the playback interface as shown below. You can also add the playback cameras manually. Click  in the playback window to pop up the “Add Camera” window. Check the cameras in the window and then click “Add” to add playback camera. The record files of the added playback camera will be played in the playback interface.

